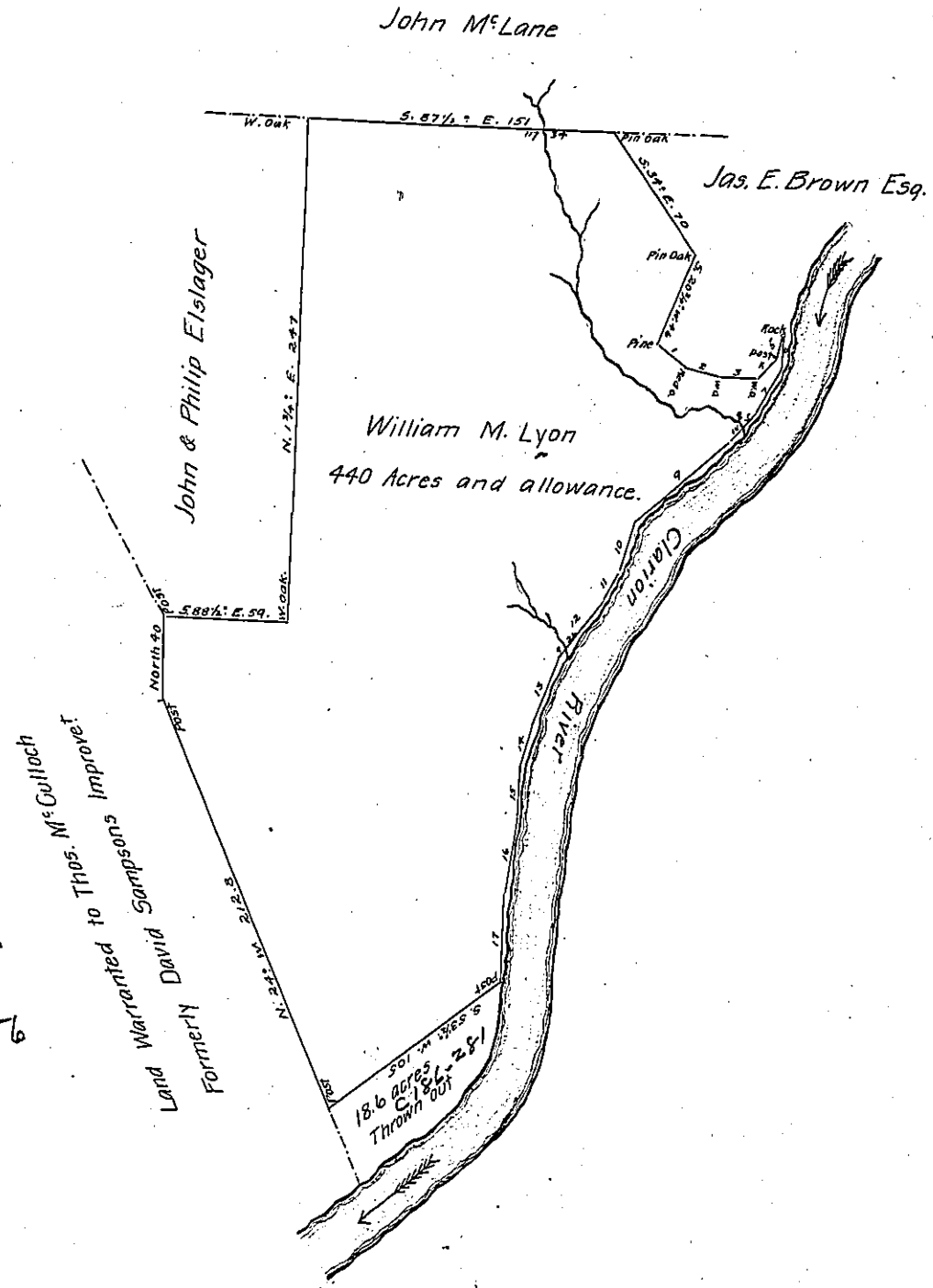


C-175-15

C. 157. 86



No.	Bearing	Dist.
1.	S. 47° E.	16.8
2.	" 73° "	16.2
3.	- 87° "	19.7
4.	N. 46° E.	15.5
5.	- 17° "	9.
6.	S. 3° W.	16.5
7.	- 27° "	25.
8.	- 40° "	19.
9.	- 50° "	60.
10.	- 15° "	25.
11.	- 32° "	16.
12.	- 37° "	35.
13.	- 21° "	34.
14.	- 15° "	21.
15.	- 4° "	26.
16.	- 9° "	35.
17.	South	43.

Pursuant to a Warrant dated the 20th day of November A.D. 1845, granted to William M. Lyon four 400 acres of land, on the 11th of February 1846, I surveyed to the said Wm. M. Lyon, the above described tract of land (including an improvement made subsequent to "March 1844") containing (440) Four hundred and forty Acres and the Allowance of Six per Centum, lying on the Clarton River, in Paint township Clarton county, bounded by lands of Thos. M. Culloch (late David Sampson), John & Philip Elslager, John M. Lane, James F. Brown Esq, and by said River. Also on the south by a portion of the same tract not embraced in the survey.

Bernard J. Reid

Hon. John Laporte }  
 Surveyor General }

D.S.

IN TESTIMONY that the above is a copy of the original remaining on file in the Department of Internal Affairs of Pennsylvania, made conformably to an Act of Assembly approved the 16th day of February, 1833, I have hereunto set my Hand and caused the Seal of said Department to be affixed at Harrisburg, this

second day of February 1926

*Geo. D. Brown*  
 Secretary of Internal Affairs.